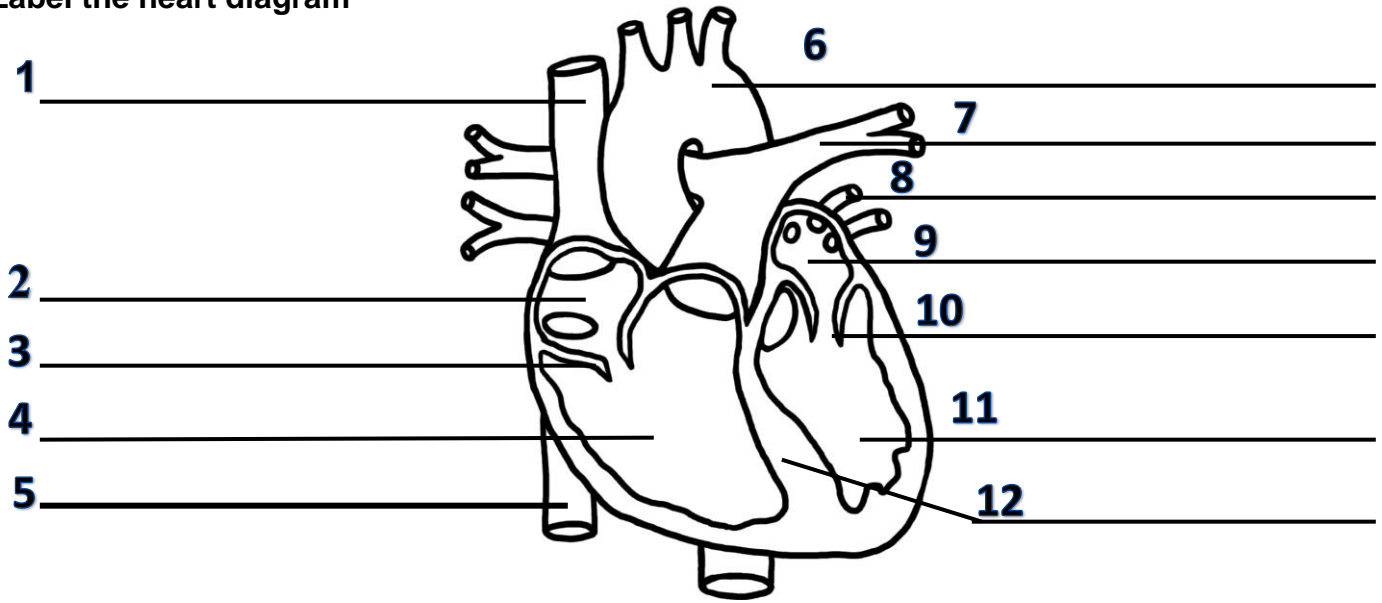


Name: \_\_\_\_\_  
Science \_\_\_\_\_

Date: \_\_\_\_\_  
**Circulatory System Review**

**Label the heart diagram**



13. What is the main job of the circulatory system? \_\_\_\_\_

\_\_\_\_\_

14. Why does the blood need to travel to the lungs before traveling to the body? \_\_\_\_\_

\_\_\_\_\_

15. What structures of the heart makes sure that deoxygenated blood never mixes with oxygenated blood?

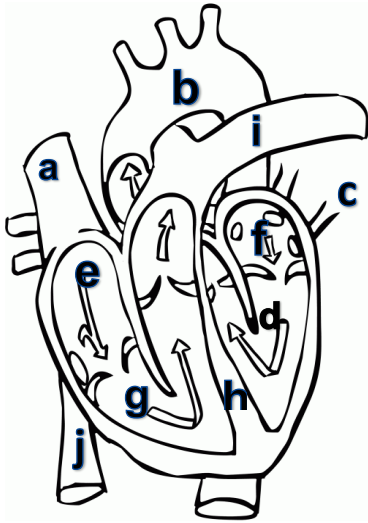
\_\_\_\_\_

16. Which type of blood vessel . . .      **a. artery**                      **b. vein**                      **c. capillary**

- |                                     |  |
|-------------------------------------|--|
| a. help the blood pump? _____       | e. have the thickest walls? _____                                      |
| b. contain valves? _____            | f. allow for the diffusion of O <sub>2</sub> & CO <sub>2</sub> ? _____ |
| c. travel away from heart? _____    | g. travel towards heart? _____   |
| d. connect arteries to veins? _____ | h. has walls only 1 cell thick? _____                                  |

17. List the 4 components of blood. \_\_\_\_\_

Use the following diagram to answer the following questions.



Which part(s) of the circulatory system . . . ?

- 18. contains oxygenated blood \_\_\_\_ & \_\_\_\_
- 19. are chambers on the left side \_\_\_\_ & \_\_\_\_
- 20. are chambers on the right side \_\_\_\_ & \_\_\_\_
- 21. is the strongest \_\_\_\_
- 22. pumps blood to the lungs \_\_\_\_
- 23. pumps blood to body \_\_\_\_
- 24. carries blood to body \_\_\_\_
- 25. carries blood to lungs \_\_\_\_
- 28. largest artery \_\_\_\_
- 26. brings blood to the heart from body \_\_\_\_
- 29. largest vein \_\_\_\_ & \_\_\_\_
- 27. brings blood to the heart from lungs \_\_\_\_

31. Which part of blood . . . ?

- RBC**
- a. contains mostly water \_\_\_\_\_
  - b. fights infections \_\_\_\_\_
  - c. helps stop bleeding \_\_\_\_\_
  - d. is straw colored \_\_\_\_\_

**WBC**

- e. contains hemoglobin \_\_\_\_\_
- f. determines blood type \_\_\_\_\_
- g. carries dissolved nutrients \_\_\_\_\_
- h. carries oxygen to cells \_\_\_\_\_

**Platelets**

**Plasma**

32. How does the digestive and circulatory work together? \_\_\_\_\_  
 \_\_\_\_\_  
 \_\_\_\_\_

33. How does the circulatory system work with the respiratory system? \_\_\_\_\_  
 \_\_\_\_\_  
 \_\_\_\_\_

**TERMS** fibrin RBC atrium ventricle aorta capillaries plasma hemoglobin platelets

- \_\_\_\_\_ 34. Disc shaped cell that contains hemoglobin to help carry O<sub>2</sub> & CO<sub>2</sub>
- \_\_\_\_\_ 35. Carries blood from heart to the rest of the body.
- \_\_\_\_\_ 36. Chemical that weaves tiny fibers across cut.
- \_\_\_\_\_ 37. Iron containing protein that attracts oxygen & carbon dioxide.
- \_\_\_\_\_ 38. The pumping chamber of the heart.
- \_\_\_\_\_ 39. Fragments that help in clotting.
- \_\_\_\_\_ 40. Absorption of materials occurs here.
- \_\_\_\_\_ 41. Carries digested nutrients.
- \_\_\_\_\_ 42. The collecting chamber of the heart.